



**RIVESTIMENTI
BUDDY**

2020



1 PREISGRUPPE
PRICE GROUP
GROUPE DE PRIX
PRECIO DE GRUPO

CITADEL



CI11



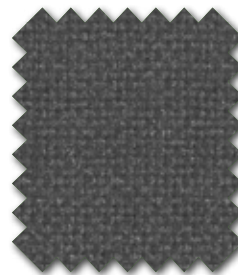
CI01



CI61



CI31



CI15



CI42



CI22



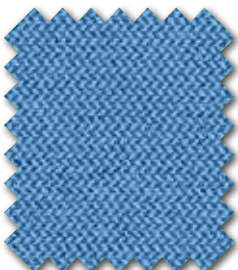
CI43

1 PREISGRUPPE
PRICE GROUP
GROUPE DE PRIX
PRECIO DE GRUPO

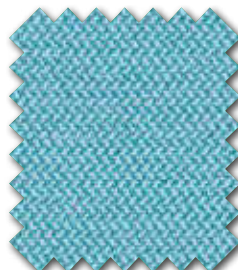
ERA



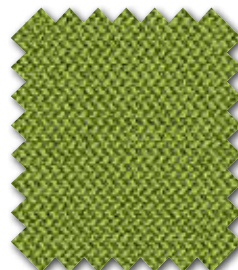
ER22



ER02



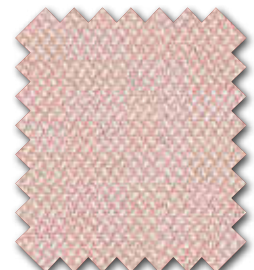
ER12



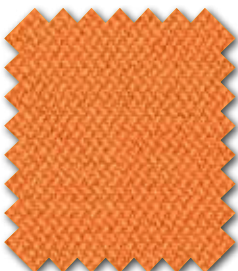
ER04



ER06



ER03



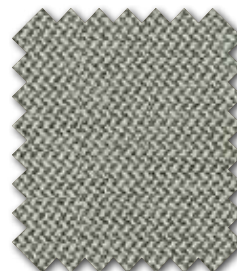
ER23



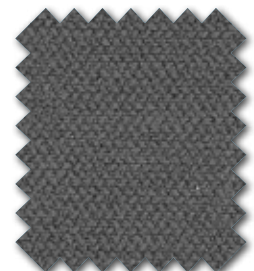
ER33



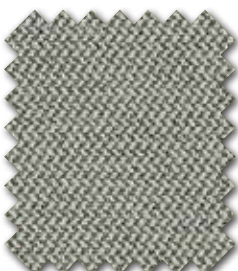
ER13



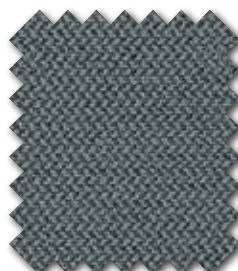
ER21



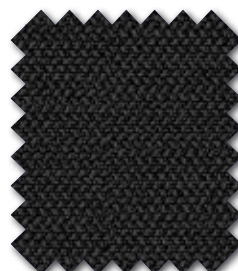
ER05



ER31



ER11



ER01

Era

100% Polyester
100% Poliéster

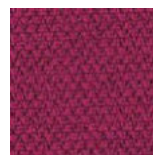
320 g/lfm
320 g/rm
320 g/ml
320 g/metro de rollo



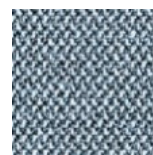
ER15
(CSE01)



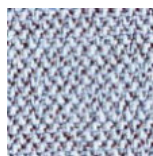
ER42
(CSE42)



ER43
(CSE17)



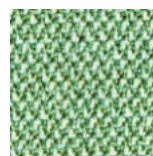
ER51
(CSE43)



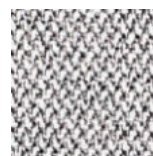
ER52
(CSE39)



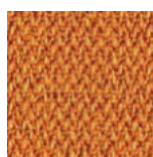
ER53
(CSE24)



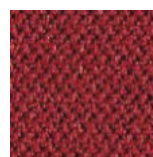
ER54
(CSE36)



ER61
(CSE46)



ER63
(CSE27)



ER73
(CSE28)

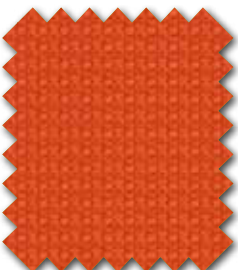
Stoffgruppe 1 / Fabric group 1 / Groupe de tissus 1 / Grupo de tapizados 1

1 PREISGRUPPE
PRICE GROUP
GROUPE DE PRIX
PRECIO DE GRUPO

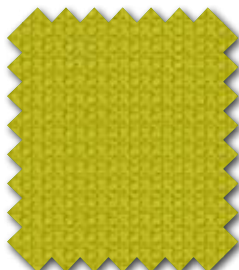
MANHATTAN



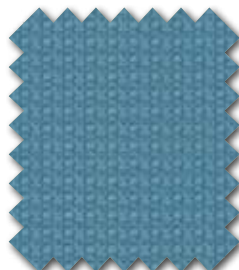
MH03



MH13



MH14



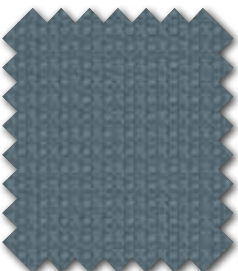
MH72



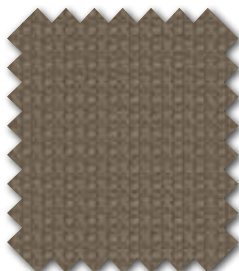
MH32



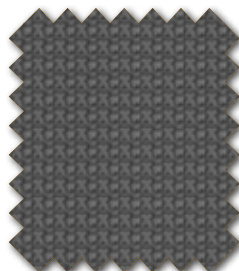
MH62



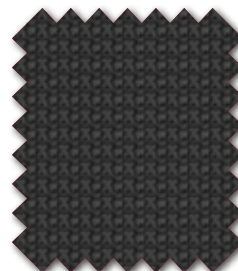
MH31



MH25



MH41



MH01

2 PREISGRUPPE
PRICE GROUP
GROUPE DE PRIX
PRECIO DE GRUPO

LUCIA

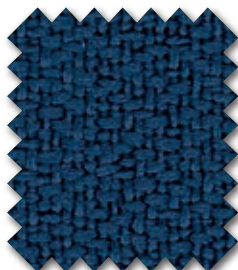
interstuhl



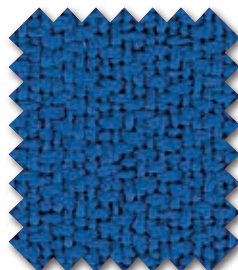
5800



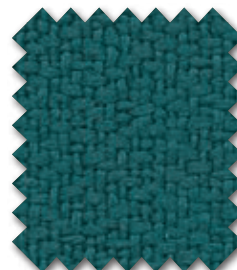
5801



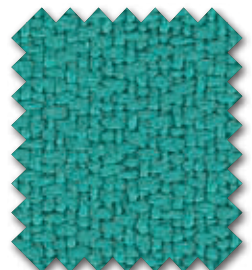
5803



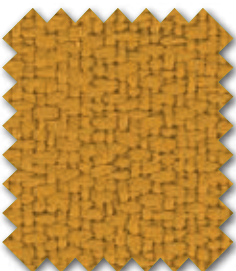
5832



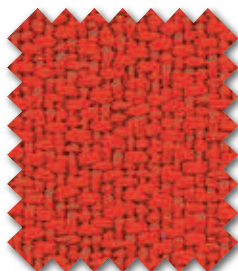
5824



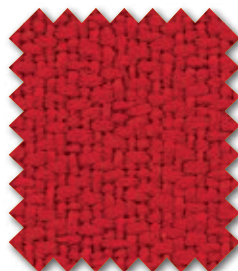
5814



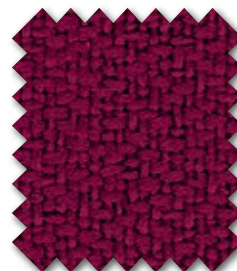
5811



5816



5805



5823



Lucia

100% Polyester

100% Poliéster

365 g/lfm

365 g/rm

365 g/ml

365 g/metro de rollo



5809

(YP108)

Stoffgruppe 2 / Fabric group 2 / Stofgruppe 2 / Grupo de tapizados 2

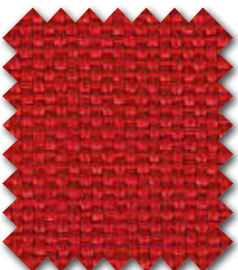
2 PREISGRUPPE
PRICE GROUP
GROUPE DE PRIX
PRECIO DE GRUPO

KING L ELAST

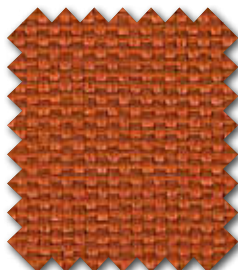
interstuhl



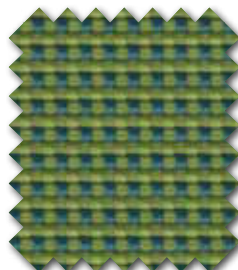
KI62



KI03



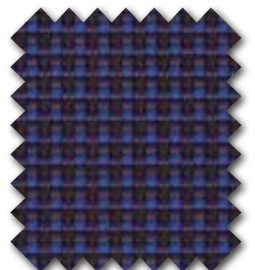
KI43



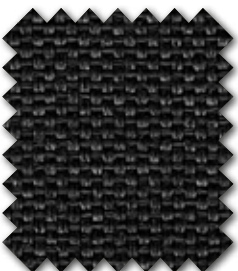
KI14



KI15



KI11



KI01



2 PREISGRUPPE
PRICE GROUP
GROUPE DE PRIX
PRECIO DE GRUPO

ROYAL

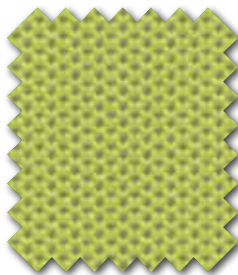
interstuhl



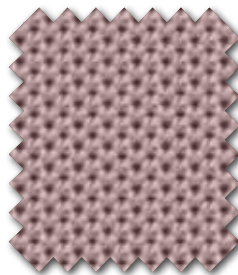
R053



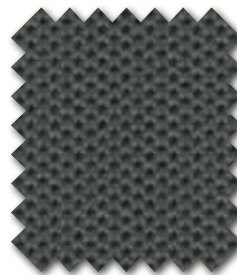
R022



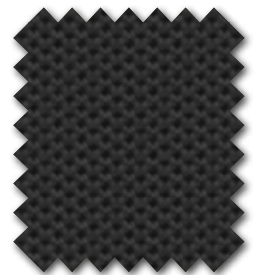
R014



R061



R011



R001

2 PREISGRUPPE
PRICE GROUP
GROUPE DE PRIX
PRECIO DE GRUPO

MEDLEY

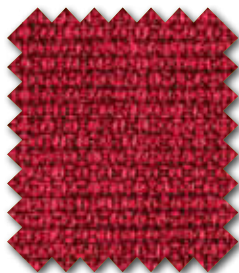
interstuhl



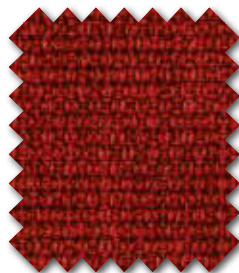
MD14



MD06



MD03



MD43



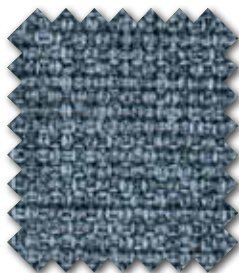
MD23



MD22



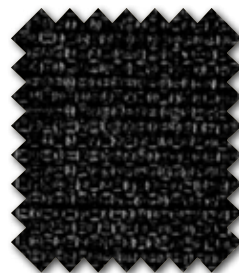
MD32



MD21



MD31



MD01

3 PREISGRUPPE
PRICE GROUP
GROUPE DE PRIX
PRECIO DE GRUPO

FAME

interstuhl



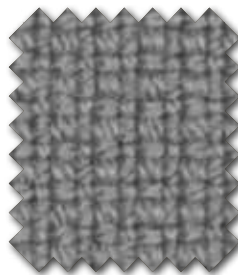
FA15



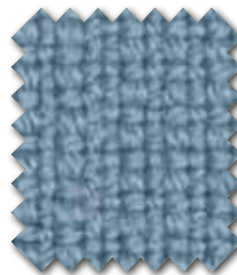
FA01



FA61



FA91



FA32



FAA2



FA44



FA13

Fame

95% Schurwolle
5% Polyamid

95% New wool
5% Polyamide

95% Pure laine
5% Polyamide

95% Lana esquilada
5% Poliamida

630 g/lfm

630 g/rm

630 g/ml

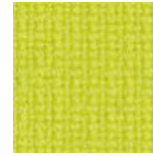
630 g/metro de rollo



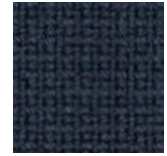
FA02
(66071)



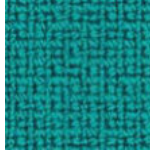
FA07
(60005)



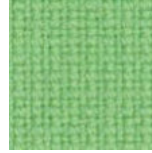
FA16
(62067)



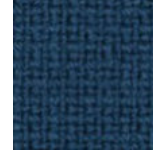
FA21
(60017)



FA24
(67016)



FA54
(68147)



FA62
(67005)



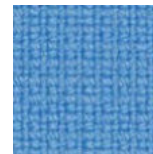
FA64
(68144)



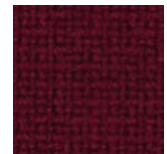
FA72
(67069)



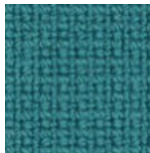
FAB2
(67068)



FAC2
(66118)



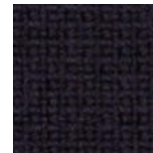
FAH3
(64058)



FAI2
(67067)



FAJ3
(64169)



FAK3
(64055)

Stoffgruppe 3 / Fabric group 3 / Groupe de tissus 3 / Grupo de tapizados 3
(weitere auf Folgeseite / further on the next page / suite sur la page suivante / más en la siguiente página)

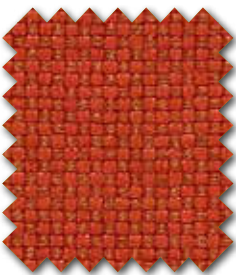
3 PREISGRUPPE
PRICE GROUP
GROUPE DE PRIX
PRECIO DE GRUPO

FIELD

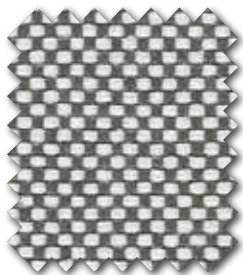
interstuhl



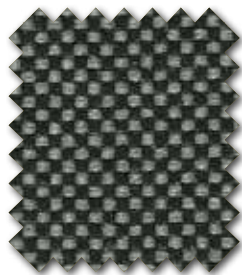
F132



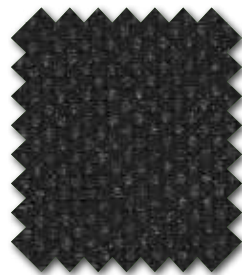
F103



F181



F141



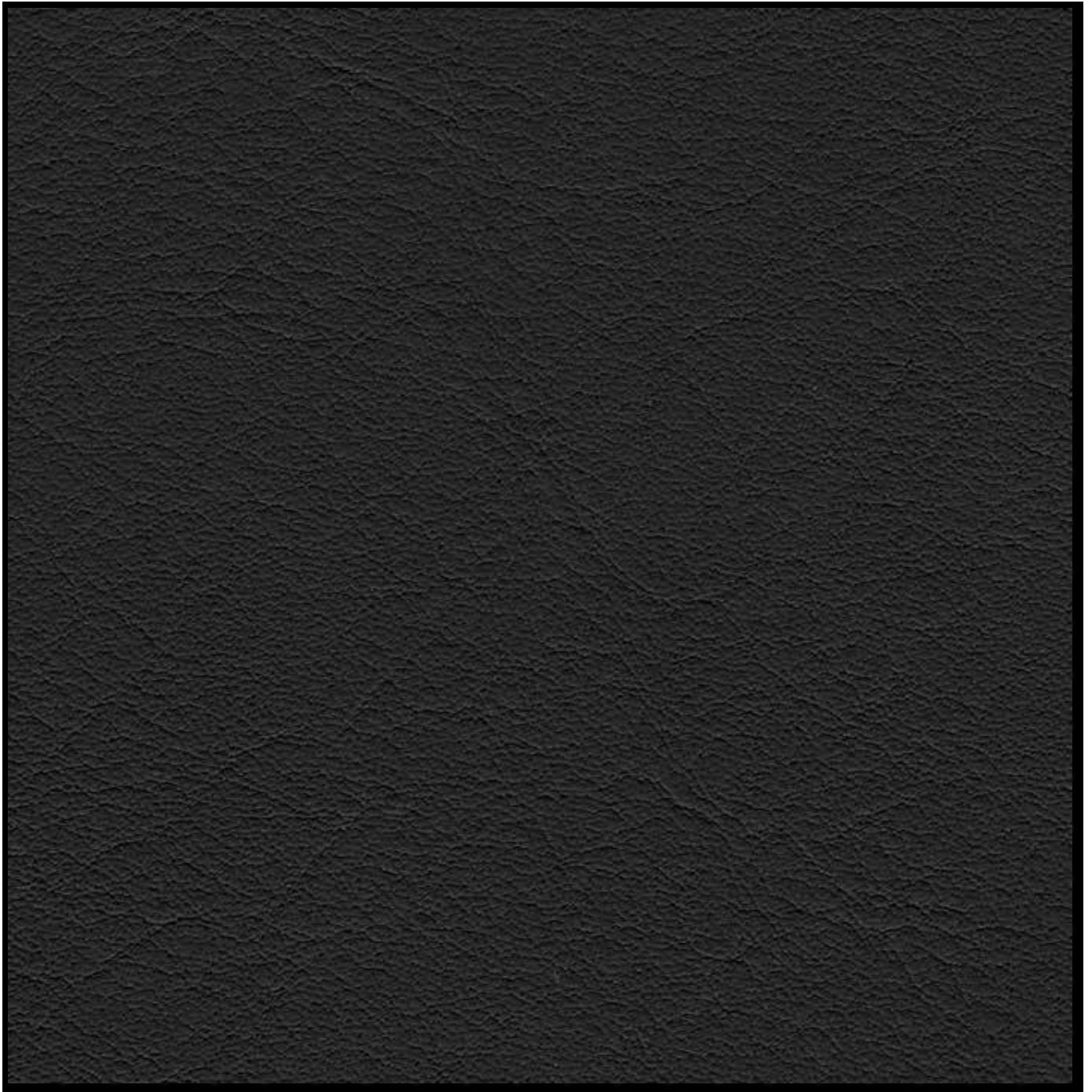
F151

6*
NAPPA
LEATHER



RIND NAPPA

interstuhl



0781

* Entspricht Ledergruppe 6 der Preisliste
* Correspond au cuir groupe 6 du tarif public

* Equal to leather group 6 of the price list
* Corresponde a grupo de pieles 6 de la lista de precios

ENJOY SEATING PERFORMANCE.





8140



8144



8148

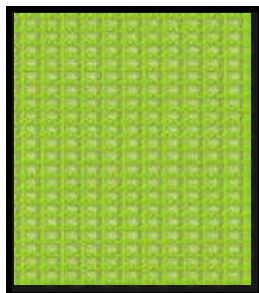
BYDDY^{IS3}



8123



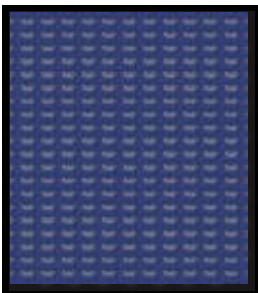
8113



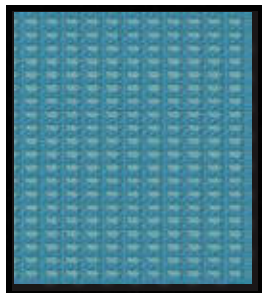
8114



8125



8162



8172

BUDDY^{IS3}

RIVESTIMENTI E TESSUTI : DATI TECNICI

Gruppo	Tessuto	Materiale	Peso	Larghezza in cm	Resistenza all'abrasione EN ISO 12947-2	Valori pilling (1-5) EN ISO 12945-2	Resistenza allo sfregamento 1 (1-5) EN ISO 105X-12	Resistenza alla luce 2 (1-8) EN ISO 105B 02	Standard antincendio								Prezzo in €
									D	A	CH	F	GB	NL	ES		
SG1	Citadel	100% polipropilene FR	320 g/rm	140	≥30,000	3-4	4	6	1;2;3	1;2	1;2	1;2	1;2	1;2;4	1;2;3	1;2;3	49,-
	Era 2	100% poliestere	448 g/rm	140	≥100,000	4-5	4	5	1;2	1;2	1;2	1;2	1;2;4	1;2	1;2	49,-	
	Manhattan 2	100% poliestere riciclato	405 g/rm	140	≥50000	4-5	4	6	1;2	1;2	1;2	1;2	1;2;4	1;2	1;2	49,-	
SG2	Lucia 2	100% poliestere	400 g/rm	140	≥100,000	3-4	4	6	1;2	1;2	1;2	1;2	1;2;4	1;2	1;2	93,-	
	King (L Eleast) 2	100% poliestere (Trevira CS)	365 g/rm	140	70.000	5	4-5	6	1;2;3	1;2	1;2	1;2;3	1;2;3;4	1;2;3;4	1;2;3	93,-	
	Royal	100% poliestere	490 g/rm	150	≥100,000	4-5	4	5	1;2	1;2	1;2	1;2	1;2;4	1;2	1;2	93,-	
	Medley 2	100% poliestere	510 g/rm	140	75.000	4	4-5	5-7	1;2	1;2	1;2	1;2	1;2	1;2	1;2	93,-	
	Amalfi	Ecopelle sintetica 13,85 % PES 86,15 PVC	910 g/rm	140	75.000		5	6	1;2;4	1;2	1;2	1;2;4	1;2	1;2	1;2;4	93,-	
SG3	Fame 2	95% lana vergine 5% poliamide	630 g/rm	140	200.000	4	4-5	5-7	1;2	1;2	1;2	1;2	1;2;3	1;2	1;2	119,-	
	Field 2	100% poliestere (Trevira CS)	450 g/rm	140	100.000	4-5	4-5	5-7	1;2;3	1;2	1;2	1;2	1;2;3	1;2;3	1;2;3	119,-	
	Climatex Ultra 2	72% Cradura™ 16% pura lana vergine 12% Lenzing FR™	437 g/rm	141	> 500.000	4	4-5	6-7	1;2	1;2	1;2	1;2	1;2	1;2	1;2	119,-	
HP4	Synergy 2	95% lana vergine 5% poliamide	560 g/rm	140	≥100,000	3	4	5	1;2	1;2	1;2	1;2	1;2;4	1;2	1;2	138,-	
	Puxx 1,2	Ecopelle sintetica (100% poliuretano)	740 g/rm	145	90.000		4-5	6-7	1;2	1;2	1;2	1;2	1;2;3	1;2	1;2	138,-	
	Rime 2	90% lana vergine pettinata 10% Nylon	580 g/rm	140	100.000	4	4-5	5-6	1;2;4	1;2	1;2	1;2	1;2	1;2	1;2;4	138,-	
LG6	Pelle Nappa 3	pelle tinta anilina					≥ 4	≥ 5	1;2	1;2	1;2	1;2	1;2	1;2	1;2	172,-	
LG7	Pelle Ascot 3	pelle pieno fiore con finitura leggera					≥ 4	≥ 5	1;2	1;2	1;2	1;2	1;2	1;2	1;2	401,-	

¹ B1 su richiesta.

² I materiali hanno la certificazione "Öko-Tex / EU-Flower". Pertanto, i modelli sono conformi alla certificazione "Testato per sostanze nocive".

³ Pelle certificata con "Blue Angel". Pertanto, i modelli sono conformi alla certificazione "Testato per sostanze nocive".

Fire-safety standards

D 1 EN 1021 part 1
2 EN 1021 part 2
3 DIN 4102 part 1; B1
4 DIN 4102 part 1; B2

A 1 EN 1021 part 1
2 EN 1021 part 2

CH 1 EN 1021 part 1
2 EN 1021 part 2

F 1 EN 1021 part 1
2 EN 1021 part 2
3 NF P 92501-7; M1
4 NF P 92503; M2

GB 1 EN 1021 part 1
2 EN 1021 part 2
3 BS 5852 part II
4 BS 7176 Low Hazard

NL 1 EN 1021 part 1
2 EN 1021 part 2
3 DIN 4102 part 1; B1
4 NF P 92501-7; M1

ES 1 EN 1021 part 1
2 EN 1021 part 2
3 DIN 4102 part 1; B1
4 DIN 4102 part 1; B2

¹ EN ISO 105X12
² EN ISO 105B02

RIVESTIMENTI PER SINGOLE FAMIGLIE DI PRODOTTO

Gruppo	Tessuto	Silver	VINTAGE ^{IS5}	Champ	AirPad	Hero	PURE ^{IS3}	JOYCE ^{IS3}	YOSTER ^{IS3}	MOVY ^{IS3}	Goal-Air	Goal	¹ AIM ^{IS1}	¹ EVERY ^{IS1}	XXXL	HUB- Poltrona, Divano, Angolo Divano, Panca, Sgabello, Altalena, Cuscini	HUB- Moduli per pareti divisorie, pare multimediali, pareti mobili, pareti modulari per divano, moduli conferenza, cabine telefoniche	TANGRAM ^{IS5}	LEMON ^{IS5}	LIME ^{IS5}	KINETIC ^{IS5}	¹ BUDDY ^{IS3}	VLEGS ^{IS3} - Sedia per visitatori & panche trasversali	VLEGS ^{IS3} - Panche imbottite	SHUFFLE ^{IS1}	CURVE ^{IS1}
SG1	Citadel					o	x	x	x	x	o	o	x	x		x	x	x				x	x	x	x	x
	Era					x	x	x	x	x	x	x	x	x		x	x	x	x	x		x	x	x	x	x
	Manhattan					x	x	x	x	x	x	x	x	x		x	x					x	x	x	x	x
	Strick							x ²																		
SG2	Lucia		x	x	x	x	x	x	x	x	x	x	x	x		x	x	x	x	x	x	x	x	x	x	x
	King		x	x	x	x	x	x	x	o	x	x	x	x		x	x	x	x	x	x	x	x	x	x	x
	Royal			x	x	x	x	x	x	x	x	x	x	x		x	x					x	x		x	x
	Medley		x	x	x	x	x	x	x	x	x	x	x	x		x	x	x	x	x	x	x	x	x	x	x
	Amalfi			x	x	x	x	x	x	o	x	x	x	x		x		x	x	x	x		x	x	x	
SG3	Fame	x	x	x	x	x	x	x	x	x	x	x	x	x	x	x	x	x	x	x	x	x		x	x	
	Field	x	x	x	x	o	x	x	o	x	x	o	x	x	x	x	x	x	x	x		o		x	x	
	Climatex Ultra									x		x			x	x									x	
HP4	Synergy	x	x	x	x	x	x	x	x	x	x	x	x	x	x	x	x	x	x	x					x	
	PUxx		x	x	x	x	x	x	x	o	x	x		x	x	x		x								
	Rime	x	x	x	x	x	x	x	x	x	x	x		x	x	x	x	x	x	x					x	
LG6	Pelle Nappa		x	x	x	o	x	x	o	x	x	x	x	o	o				x	x		x	x	x		
LG7	Pelle Ascot	x	x	x	x	x	x	x	x	x			x		x	x		x	x	x	x		x	x		
Due colori di rivestimento diversi nello stesso gruppo di tessuti per sedile e schienale comportano un aumento in €			19				19	19	19	19	19	19	19													

o = aumenta grinze e pieghe

Note:

¹ Per le collezioni EVERY, BUDDY e AIM con Chillback e schienale imbottito scegliere il tessuto solo nelle pagine della collezione.

² Solo per i modelli in rete e softback JOYCE.